

NEW LONDON TOWNSHIP MAILBOX REPLACEMENT POLICY

In most cases, it is the weight of snow coming off a snowplow that damages a mailbox, not an actual hit by plow equipment. Most winter mailbox damage would be eliminated if postal patrons would install a mailbox that swings away when hit by snow or by snowplow equipment.

For the reason listed above; New London Township will consider repair and/or replacement of a mailbox that the snowplow hits and/or damages ONLY IF the mailbox was mounted on a township approved swing-away mailbox support. If that is the case, the township will repair or replace the support and allow \$ 30.00 for replacing a damaged mailbox.

No other support or attached mailbox will be repaired or replaced.

Adopted this 26 day of April, 2018.

BY THE TOWN BOARD



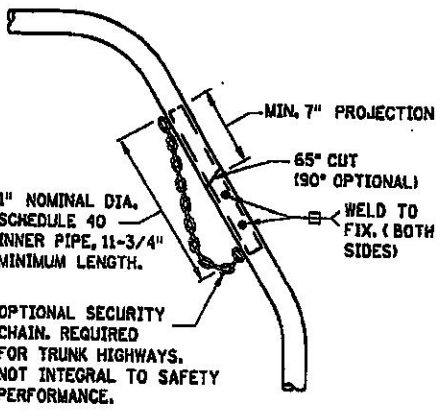
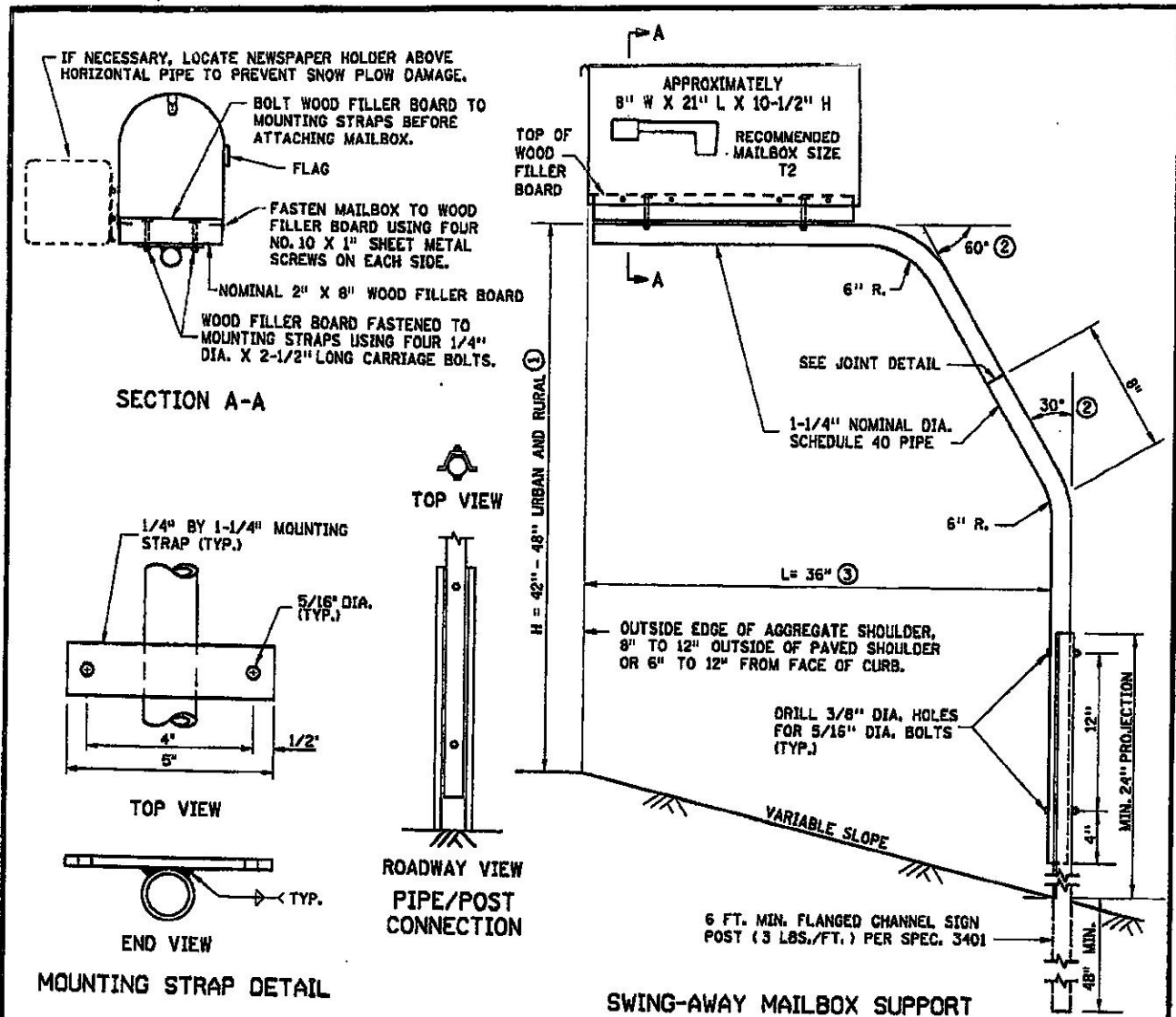
Town Chairperson

Attest:




Town Clerk

This is a diagram of a swing-away, steel post, mailbox support which is approved by the township. A town approved swing-away mailbox support can be purchase through JMD Manufacturing. For your convenience, a JMD flier has been attached.



NOTES:
 MAILBOX LOCATIONS SHOULD BE STAKED BEFORE INSTALLATION FOR PROPER HEIGHT AND DISTANCE FROM THE ROADWAY. ONCE STAKED, THE INSTALLER MUST NOTIFY THE ENGINEER AND THE POST OFFICE. THE ENGINEER AND THE POSTMASTER SHALL APPROVE THE STAKED LOCATIONS PRIOR TO FINAL INSTALLATION.
 THE MINIMUM SPACING (CENTER TO CENTER) BETWEEN MULTIPLE MAILBOX SUPPORTS SHALL BE EQUAL TO THE HEIGHT OF THE MAILBOX SUPPORT.
 OTHER MAILBOX SUPPORT DESIGNS MAY BE USED IF THEY SATISFY NCHRP REPORT 350 CRITERIA IN ACCORDANCE WITH FHWA ACCEPTANCE LETTER, MEET MINNESOTA RULES 8818 AND U.S. POST OFFICE RECOMMENDATIONS AND ARE IN COMPLIANCE WITH MN/DOT REQUIREMENTS WHICH MAY INCLUDE THE FOLLOWING (REQUIRED ON TRUNK HIGHWAYS):
 PIPE SHALL CONFORM TO SPEC. 3362, SCHEDULE 40 OF ASTM A53/A53M.
 ALL FASTENERS SHALL CONFORM TO SPEC. 3391.
 PIPES, POST AND OTHER STEEL COMPONENTS SHALL BE GALVANIZED PER SPEC. 3392.
 THE CONTRACTOR SHALL SEND THE SHOP DRAWINGS TO THE ENGINEER FOR APPROVAL. FOR QUESTIONS REGARDING DESIGN ELEMENTS AND BREAKAWAY FEATURES, CONTACT THE DESIGN STANDARDS UNIT.

- ① ANY CHANGE IN HEIGHT (H) MUST BE APPROVED BY LOCAL POSTMASTER.
- ② 45° BENDS MAY BE USED AS AN OPTION.
- ③ A 48" OR 53" CANTILEVER LENGTH (L) MAY BE USED AS AN OPTION FOR NON-TRUNK HIGHWAY USE.

APPROVED JUNE 1, 2007

 STATE DESIGN ENGINEER

STATE OF MINNESOTA
 DEPARTMENT OF TRANSPORTATION
MAILBOX SUPPORT
 SWING-AWAY TYPE

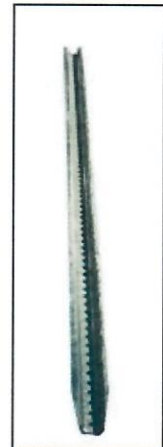
SPECIFICATION REFERENCE
 3362
 3391
 3392
 3401

STANDARD PLATE NO.
9350A


[HOME](#)
[OUR PRODUCTS](#)
[CUSTOM PROJECTS](#)
[MACHINING](#)
[WELDING & FABRICATION](#)
[CONTACT US](#)

The Post


MP 36

MP 48

Sign Post

Now you can buy the 36" or 48" cantilever along with a sign post directly from the manufacturer. These heavy steel constructed and galvanized posts are designed to meet the Minnesota Department of Transportation's specifications for swing away mailbox support post and are now available to the private individual.

The swing away design reduces or eliminates damage done by snowplows and has been crash tested and approved for use by the FWHA.

Specifications

- Heavy steel construction
- Galvanized
- Security chain
- Meets all of the criteria described in the Minnesota Department of Transportation's Standard Plate # 9350A titled "mailbox support swing away type" approved 6/1/2007
- [Swing - Away Mailbox Support Diagram](#)

Pricing

Part no.	Description	Price	UOM
MP036	36" mail box post	\$57.00	Each
MP048	48" mail box post	\$63.00	Each
MP2100	6' sign post x 3 lbs.	\$21.00	Each
MP1010	MTG BKT Flyer (2/post)	\$6.00	Each

For quantities of 10 or more, please contact us for pricing.

Shipping & Tax are extra (mailboxes are not included).

Please contact us at info@jmdmanufacturing.com or (320) 231-2686 for pricing information.